



# Leadership

653,300

In my first year as the Executive Director of the Big Ten Academic Alliance, I have been constantly reminded of the wisdom of the proverb: "If you want to go fast, go alone. If you want to go far, go together." Whether it's educating the nation's future leaders or conducting path-breaking research, we can go further together.

It was that spirit that led the Presidents of our member institutions to establish the Committee on Institutional Cooperation in 1958. They understood that together they could create a dynamic culture of collaboration that amplified the impact of each institution's efforts.

Nearly six decades later, the Big Ten Academic Alliance is the nation's premier academic collaborative. No consortium of universities graduates more students, conducts more funded research, or has a longer history of successful collaboration. Our universities serve their states, lead the nation, and change the world. Together, through the Big Ten Academic Alliance, they meet those goals faster, better, and more efficiently.

There is extraordinary power in the collective. At the Big Ten Academic Alliance, we know we want to go far, so we go together.



*Keith A. Marshall*

Keith A. Marshall, Ph.D.  
Executive Director  
Big Ten Academic Alliance





# 81

● **faculty and students** at Big Ten universities in 2016; that includes 49,772 faculty and 603,609 students



**14** **universities** comprise the Big Ten Academic Alliance

**59** **years** since the Big Ten Academic Alliance was founded  
(originally called the Committee on Institutional Cooperation)

**1,500+** **fellows** have completed the Big Ten Academic Alliance's **Academic Leadership Program**, many of whom have gone on to serve with distinction as college presidents, provosts, and deans

# Research

# \$10

● **in funded research**, more than the Ivy League's \$4.4 billion and the University of California system's \$4.4 billion combined

● The \$10 billion in funded research being conducted at Big Ten universities expands knowledge, leads to new technologies and medical advances, and explores the possibilities of human and scientific frontiers. At the same time, university research is a key component of the U.S. economic ecosystem, returning the investment through enormous public value and impact on businesses and suppliers in sectors such as manufacturing, equipment, and technology.



## 75,000

**research-trained graduates**

are employed one year after leaving a Big Ten university; 66% enter the private sector at an average annual salary of \$53,050; 34% enter the education sector at an average annual salary of \$47,620



**872** **patents** issued to Big Ten universities—  
innovation that creates financial impact across the marketplace



**70,000** **individuals** are  
employed in research services across 11 of the Big Ten schools;  
40% are students, 18% are faculty



**1,484** **counties** across the U.S.  
benefit from Big Ten research dollars through scientific  
equipment and technology expenditures





# 113,799

## Libraries



**library volumes** across the Big Ten, the largest academic collection in North America

The vision of the Big Ten Academic Alliance is to be the most responsive and effective framework for academic collaboration—and the Big Ten libraries are leaders at putting that vision into action. Together, the libraries maximize their resources and investments to provide BTAA faculty and students with access to an unmatched suite of services and scholarly material to advance research, teaching, and student success.



# 466,000

library items loaned through **UBorrow**



# 4014

## 1,863

titles in **40 languages** are available because of the Big Ten  
Academic Alliance's Cooperative Cataloging Partnership



## 8,500,000

library volumes **digitized**

and deposited in the HathiTrust Digital Repository



## 255,000

**journal volumes** in the Shared Print Repository save  
each library money and space while preserving materials for  
long-term use

# Student Experience



**freshmen** entered Big Ten universities in 2016-17; over the past 20 years, Big Ten universities have seen a 35% increase in the average size of freshmen classes and a 19% increase in total undergraduate enrollment

Big Ten Academic Alliance programs exponentially increase opportunities and access for students. When students enroll at a Big Ten institution, they open their world far beyond what any one school could offer. Whether studying in Madison or College Park, a student's university's participation in the Big Ten provides expanded access to resources, languages, classes, and international study opportunities.




## 93%

student **retention rate** at Big Ten universities, compared to 74% nationally





**82%** 

**graduation rate** at Big Ten universities, compared to 53% nationally



**172**

less commonly taught languages have been offered  
to Big Ten students through **CourseShare**



**29,181**

Big Ten students **studying abroad**

# Savings

in **aggregated savings** over the last 5 years through the combined purchasing power of the Big Ten Academic Alliance

A central strategic focus of the Big Ten Academic Alliance is to combine, leverage, and expand the resources of member universities. Our large-scale-solutions approach maximizes efficiencies and enhances purchasing power—all of which create a big impact and big savings for the collective enterprise.



**\$8 million**

in annual savings through **OmniPoP**, the fiber optic network shared infrastructure



**\$30 million**

in **library licensing savings** over the last 5 years



**\$8.4 million**

in savings through 50 **procurement agreements**

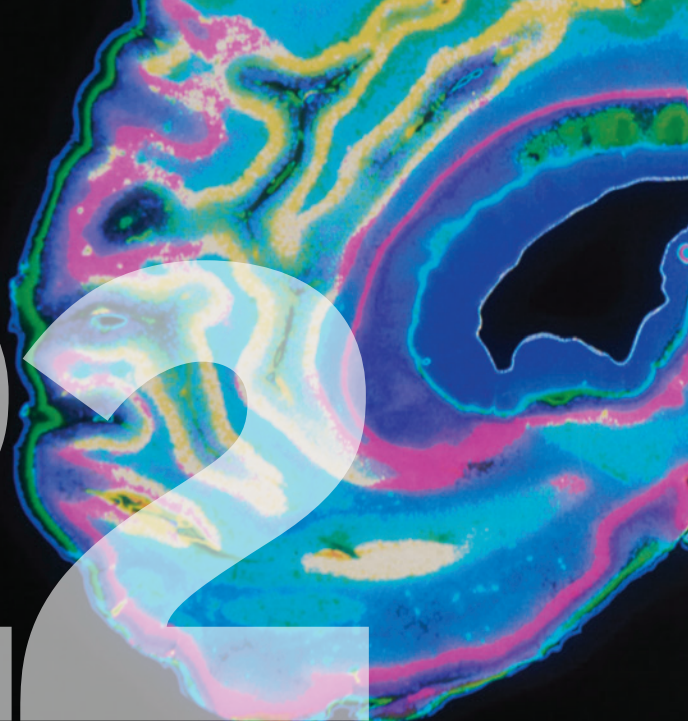


**\$75.5 million**

in **consortial contract** spend



# Solutions



institutions make up the Big Ten/Ivy League **Traumatic Brain Injury Research Collaboration**, drawing on the intersection of great athletics and great academics to study the effects of traumatic brain injury in sports

The Big Ten Academic Alliance provides the infrastructure to advance collaboration and support innovation. This network of trust creates opportunities for new alliances to be forged, new pathways to progress to be opened, and new solutions to be uncovered.



## 11

**state Departments of Health** are collaborating with Big Ten universities to improve the health outcomes for 3 million vulnerable children



127 

faculty and public health professionals are partnering  
to support the **Health Equity Initiative**



140

postdoctoral fellows in **STEM disciplines** have been recruited  
through the **Professorial Advancement Initiative** in the last four years



3x

increase in the average number of **underrepresented  
minority faculty members hired** in STEM disciplines  
since the beginning of the Professorial Advancement Initiative



## STATEMENT OF FINANCIAL POSITION

June 30, 2017

### Current Assets

Cash	\$7,381,686
Grants Receivable	18,969
Accounts Receivable, Related Parties	1,657,896
Other Receivables	553,335
Prepaid Expenses	819,794
Deposit Receivable	5,000
Prepaid Leases	66,564
<b>Total Current Assets</b>	<b>10,503,244</b>

### Current Liabilities

Accounts Payable, Related Parties	\$781,699
Accounts Payable, Other	2,667,774
Accrued Compensated Absences	203,641
Deferred Revenue	1,715,788
<b>Total Current Liabilities</b>	<b>5,368,902</b>

### Property and Equipment, Net

592,456

### Net Assets

Unrestricted 6,168,528

### Other Assets

Deposit Receivable	30,000
Prepaid Leases, Net of Current Portion	411,730
<b>Total Other Assets</b>	<b>441,730</b>

### Total Assets

\$11,537,430

### Total Liabilities and Net Assets

\$11,537,430

## STATEMENT OF ACTIVITIES

For the Year Ended June 30, 2017

### Support and Revenue

Member Dues	\$3,534,732
Program Revenues	2,455,982
OmniPoP and Fiber Optic Ring	1,118,813
Seminars and Conferences	88,423
Member Reimbursements	42,397
Coordination Fees	244,561
Other Income	74,870
Electronic Licensing and Purchasing, Net of Direct Costs	0
<b>Total Support and Revenue</b>	<b>7,559,778</b>

### Expenses

Program Services	4,273,353
Supporting Services: Management & General	2,782,876
<b>Total Expenses</b>	<b>7,056,229</b>

### Change in Unrestricted Net Assets

503,549


### Unrestricted Net Assets, Beginning of Year

5,664,979

### Unrestricted Net Assets, End of Year

\$6,168,528





The Big Ten Academic Alliance is a consortium of world-class research universities governed by its member provosts and supported by campus investment.

### **Provosts**

*July 1, 2016–June 30, 2017*

**Karen Hanson**, *BTAA Chair*  
University of Minnesota

**John Wilkin**  
University of Illinois

**Lauren Robel**  
Indiana University

**Susan Curry**  
University of Iowa

**Mary Ann Rankin**  
University of Maryland

**Paul Courant**  
University of Michigan

**June P. Youatt**  
Michigan State University

**Donde Ashmos Plowman**  
University of Nebraska-Lincoln

**Daniel I. Linzer**  
Northwestern University

**Bruce A. McPheron**  
Ohio State University

**Nicholas P. Jones**  
Pennsylvania State University

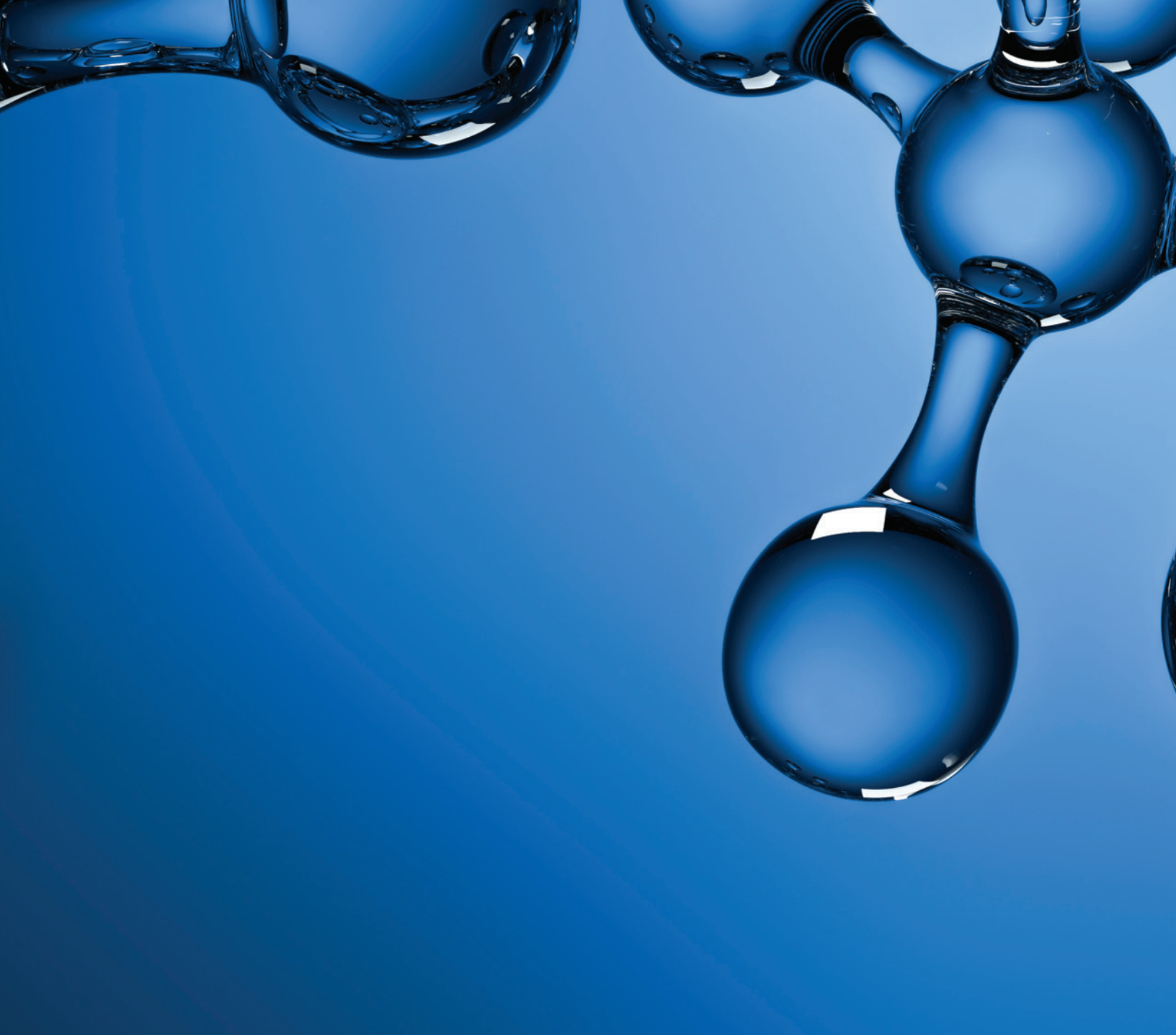
**Debasish Dutta**  
Purdue University

**Richard L. Edwards**  
Rutgers University-New Brunswick

**Sarah C. Mangelsdorf**  
University of Wisconsin-Madison

**150** •  
**provosts** have served on the board  
of the Big Ten Academic Alliance since  
its founding





1819 South Neil Street, Suite D  
Champaign, IL 61820-7271  
[www.btaa.org](http://www.btaa.org) • 217.333.8475  
[info@btaa.org](mailto:info@btaa.org)