

Michael Adams

INDIANA UNIVERSITY



Provost Professor
English
adamsmp@indiana.edu

DEO FELLOWS 2022-2023

Michael Adams is Provost Professor and Chair of the English Department at Indiana University in Bloomington and a three-time alum of the University of Michigan, so perhaps unusually committed to the Big Ten. He studies the history of English language, the cultural importance of dictionaries, the ways in which dictionaries and other language scholarship embed and promote ideologies. He has written books about slang and profanity, as well as tamer subjects, and has served as editor of the journals 'Dictionaries' and 'American Speech'.

Neda Atanasoski

UNIVERSITY OF MARYLAND



Professor and Chair
Harriet Tubman Department of
Women, Gender and Sexuality
Studies
natanaso@umd.edu

Neda Atanasoski is Professor and Chair of the Harriet Tubman Department of Women, Gender and Sexuality Studies at the University of Maryland, College Park. She is the author of *Humanitarian Violence: The U.S. Deployment of Diversity* (2013), co-author of *Surrogate Humanity: Race, Robots, and the Politics of Technological Futures* (2019) with Kalindi Vora. She is currently the co-editor of the journal *Critical Ethnic Studies*. Previously, Atanasoski was Professor the founding co-Director of the Center for Racial Justice at UC Santa Cruz.

Donald Becker

UNIVERSITY OF NEBRASKA-
LINCOLN



Professor and Chair
Biochemistry
dbecker3@unl.edu

DEO FELLOWS 2022-2023

I joined the University of Nebraska-Lincoln (UNL) in 2003. I am a Charles Bessey Professor of Biological Chemistry and currently serve as Chair of the Department of Biochemistry and direct a NIH T32 Predoctoral Training Program at UNL. Previously, I was the Director of the Nebraska Redox Biology Center. My research involves studies of proline metabolism, redox enzymology, and redox regulation of enzymes and gene expression. The overall goal of my research is to understand how proline metabolism impacts cellular processes that are critical in human health and disease.

Robert Brame

UNIVERSITY OF MARYLAND



Professor and Chair
Criminology & Criminal Justice
rbrame@umd.edu

I serve as Professor and Chair of the Criminology and Criminal Justice Department at the University of Maryland.

Ana Maria Brannan

INDIANA UNIVERSITY



Associate Professor
Curriculum & Instruction
brannana@indiana.edu

I conduct research related to children with emotional and behavioral disorders and their families. I have also worked on assessment of service practices and service system performance. My primary teaching responsibilities are in the areas of classroom and behavior management, and assessment to inform individualized instruction. I currently serve as chair of the Department of Curriculum and Instruction. For fun I spend time with clay in a cooperative pottery studio, make music, and hike.

Angela Brintlinger

OHIO STATE UNIVERSITY



Chair and Professor
Slavic & East European Languages
& Cultures
brintlinger.3@osu.edu

Angela Brintlinger is professor of Russian literature and culture and chair of the Department of Slavic & East European Languages & Cultures at Ohio State University, where she has worked for almost thirty years. She also directs the Center for Slavic, East European & Eurasian Studies, a federally funded National Resource Center.

David Brown

UNIVERSITY OF MINNESOTA



Interim Chair
Veterinary and Biomedical
Sciences
brown013@umn.edu

David R. Brown earned his PhD degree in Pharmacology from Emory University and was a NIH-sponsored research investigator at the University of Chicago and University of Michigan Medical Schools. He has been on the College of Veterinary Medicine faculty at the University of Minnesota for 38 years, and serves as Professor and Interim Chair of the Dept of Veterinary and Biomedical Sciences. He leads core courses in pharmacology and toxicology to veterinary and graduate students. His research in neurogastroenterology was funded by NIH and he has authored over 140 publications.

Kristin Buss

PENNSYLVANIA STATE
UNIVERSITY



Head and McCourtney Professor
of Psychology
Psychology
kab37@psu.edu

Kristin Buss was appointed Head of Psychology in July of 2019. She earned a B.S. in Human Development at University of Minnesota, and a M.S. and PhD in Developmental Psychology from the University of Wisconsin in 2000. Kristin joined the faculty as an Associate Professor at Penn State in Psychology in 2006, and Promoted to Professor in 2013. In 2020, she was named the Tracy Winfree and Ted H. McCourtney Professor in Children, Work, and Families.

Brian Chu

RUTGERS UNIVERSITY-NEW
BRUNSWICK



Brian C. Chu, Ph.D., is Professor in, and Department Chair of, the Department of Clinical Psychology in the Graduate School of Applied and Professional Psychology at Rutgers University. He is also Founder and Director of the Youth Anxiety and Depression Clinic, a research clinic specializing in evaluating and providing evidence-based care for children and adolescents. Dr. Chu's areas of interest include the dissemination of evidence-based practice, effectiveness research, and the evaluation of mechanisms of change.

Professor and Chair
Clinical Psychology

brianchu@gsapp.rutgers.edu

Vicente M. Diaz

UNIVERSITY OF MINNESOTA



Chair
American Indian Studies
vmdiaz@umn.edu

I am an interdisciplinary historian and ethnographer of Native Pacific cultural and political resurgence. I have researched and published academic monographs and public history books on topics ranging from the politics of Indigenous Catholicism in Guam, Sports and Indigenous Pacific Masculinity and Militarization, Traditional Seafaring as Critique and Practice. I am also a practitioner as well as a scholar of Micronesian canoe cultural survival and revival. My move to the US midwest from the Pacific now involves helping develop the fields of comparative and global Indigenous studies.

David DiLillo

UNIVERSITY OF NEBRASKA-
LINCOLN



Willa Cather Professor & Chair
Psychology
ddilillo@unl.edu

Dr. DiLillo is a clinical psychologist by training. He has been at the University of Nebraska-Lincoln since 2000. His research has been funded by several NIH grants and focuses on the causes and consequences of interpersonal violence and alcohol use. Administratively, he previously served as the Director of Clinical Training for six years and Associate Chair of Psychology for nine years. He is currently the Chair of the Department of Psychology, a position he started in 2020.

Michael Donohoe

UNIVERSITY OF ILLINOIS



Head and Professor
Accountancy
mdonohoe@illinois.edu

Michael Donohoe is a Professor of Accountancy, Head of the Department of Accountancy, and PwC Faculty Fellow. He joined Gies College of Business in 2011 and has held several leadership roles. He earned a bachelor's degree and PhD in accounting from the University of Florida, and a master's degree in taxation from the University of North Florida. Donohoe's research explores the role of complex financial arrangements on corporate tax compliance. His business taxation instruction has received several prominent awards, including Top 50 Undergraduate Business Professor by Poets&Quants.

Anne Duncan

UNIVERSITY OF NEBRASKA- LINCOLN



Associate Professor and Chair
Classics and Religious Studies
aduncan4@unl.edu

Anne Duncan is an Associate Professor of Classics and Chair of the Department of Classics and Religious Studies at the University of Nebraska-Lincoln. Her research focuses on ancient Greek and Roman drama and performance history. She received her B.A. in English Literature from Swarthmore College and her M.A. and Ph.D. in Classical Studies from the University of Pennsylvania.

Noel Estrada-Hernandez

UNIVERSITY OF IOWA



Professor and Department
Executive Officer
Counselor Education
noel-estradahernandez@uiowa.edu

Noel Estrada-Hernández, PhD., CRC is a Professor of Rehabilitation Counseling and Department Executive Officer for Counselor Education. His research focuses on psychosocial adaptation of visible disabilities, particularly on individuals with albinism. He also studies ethical decision making with emphasis on consumer participation. Estrada-Hernández served as Fellow for Faculty Development through the Provost Office where he provided support to all faculty development initiatives available at The University of Iowa.

Sarah Fagan

UNIVERSITY OF IOWA



Professor of Linguistics and German, DEO of Linguistics. PhD in Germanic Linguistics, Cornell University.

Professor of Linguistics and
German
Linguistics
sarah-fagan@uiowa.edu

Rob Fowkes

MICHIGAN STATE UNIVERSITY



Rob is a comparative endocrinologist, who received his graduate training at the University of Bristol, before undertaking post-doctoral training at the Royal Free Hospital, Barts & the Royal London, and finally UCSF. He was faculty at the Royal Veterinary College, University of London, from 2004 to 2021, before starting a new post as Chair of Small Animal Clinical Sciences at Michigan State University, College of Veterinary Medicine. His research focus now includes endocrinopathies in companion animals and investigating spontaneous models of disease.

Professor & Chair
Small Animal Clinical Sciences
fowkesg2@msu.edu

Craig Fryer

UNIVERSITY OF MARYLAND



Associate Professor and Interim
Chair

Behavioral and Community Health
csfryer@umd.edu

Dr. Craig S. Fryer is an Associate Professor and Interim Chair in the Department of Behavioral and Community Health in the School of Public Health at the University of Maryland, College Park. Additionally, he is the Associate Director of the Maryland Center for Health Equity. As a behavioral scientist, Dr. Fryer utilizes mixed methods research to examine sociocultural and environmental contexts of well-being. Dr. Fryer's teaching, research, and servant leadership are guided by a commitment to creating a more just and equitable society for devalued and poorly served communities.

Eric Grodsky

UNIVERSITY OF WISCONSIN-
MADISON



Professor and Chair
Sociology
grodsky@wisc.edu

Eric Grodsky is Professor of Sociology and Educational Policy Studies at the University of Wisconsin- Madison. co-director of the Madison Education Partnership, a research-practice partnership between the Wisconsin Center for Education Research and the Madison Metropolitan School District, and Deputy Director of the Interdisciplinary Training Program in Education Sciences. Grodsky has written extensively on inequality in education across the lifecourse, from early childhood through college and graduate education.

Tony Grubbs

MICHIGAN STATE UNIVERSITY



Chairperson
Romance and Classical Studies
grubbsa@msu.edu

I have been at MSU since 2005. I am an Associate Professor of early modern Spanish literature and culture. I have chaired my department for four years.

Leigh Haefner

PENNSYLVANIA STATE
UNIVERSITY



Division Head
Education, Human Development
and Social Sciences
lab194@psu.edu

I am an associate professor of science education and currently serve as the head of the Division of Education, Human Development, and Social Sciences at Penn State Altoona.

Rich Holden

INDIANA UNIVERSITY



Dean's Eminent Scholar,
Professor, and Department Chair
Department of Health & Wellness
Design
rjholden@iu.edu

Dr. Holden is an engineer, psychologist, and implementation scientist who leads a funded program of applied research on aging and disease care and prevention. His research designs and evaluates technology-based interventions for middle-aged and older adults living with or at risk for chronic disease and disability, including heart failure, dementia, and hypertension. His work on aging and chronic disease appears in multidisciplinary venues including gerontology, cardiology, nursing, informatics, pharmacy, psychology, and engineering journals.

Liz Hollingworth

UNIVERSITY OF IOWA



Professor and Department Executive
Officer
Educational Policy and Leadership
Studies
liz-hollingworth@uiowa.edu

Professor Liz Hollingworth is a faculty member in the College of Education at the University of Iowa in the Educational Policy and Leadership Studies Department. She currently serves as the Interim DEO.

Anne Hughes

MICHIGAN STATE UNIVERSITY



Director
School of Social Work
hughesa@msu.edu

Anne K. Hughes (she/her) is the Director of the School of Social Work at Michigan State University. She has been in this role since August of 2020. Prior to this role she was director of the PhD program.

Vera Mikyoung Hur

UNIVERSITY OF ILLINOIS



Professor and Chair
Mathematics
verahur@math.uiuc.edu

I am a Professor of Mathematics and serves as the Department Chair at the University of Illinois Urbana-Champaign.

Krishna Jayakar

PENNSYLVANIA STATE
UNIVERSITY



Professor and Head of the
Department
Telecommunications
kpj1@psu.edu

DEO FELLOWS 2022-2023

Dr. Krishna Jayakar is Professor and Head of the Department of Telecommunications and co-Director of the Institute for Information Policy at Penn State University. He is the author of numerous journal articles, conference presentations and invited talks on telecommunications policy and media economics, specializing in universal access to telecommunications. He is the Co-Editor of the Journal of Information Policy. Dr. Jayakar has received research grants from the National Science Foundation, Pacific Telecommunications Council, Time Warner Cable, the Free Press Foundation, AT&T etc.

Derek Johnson

UNIVERSITY OF WISCONSIN-
MADISON



Chair
Communication Arts
drjohnson3@wisc.edu

I am Professor and Chair of the Department of Communication Arts at the University of Wisconsin-Madison. My research focuses on struggles over creative participation and inheritance in media entertainment industries and has produced several books, including Media Franchising: Creative License and Collaboration in the Culture Industries (2013) and Transgenerational Media Industries: Adults, Children, and the Reproduction of Culture (2019).

Kirstin Johnson

UNIVERSITY OF ILLINOIS

DEO FELLOWS 2022-2023



Head

Music and Performing Arts Library
dougan@illinois.edu

Kirstin Johnson has been the Head of the Music and Performing Arts Library at the University of Illinois at Urbana-Champaign since 2016, and was promoted to associate professor with tenure in 2014. She served as the Music and Performing Arts Librarian there from 2007-2016. Prior to coming to Illinois, she was the Interim Head and Public Services Librarian at the Duke University Music Library, and before that, a Digital Projects Librarian at the University of Wisconsin-Madison.

Douglas Karcher

OHIO STATE UNIVERSITY



Professor and Chair
Horticulture and Crop Science
karcher.3@osu.edu

Douglas Karcher, PhD, an alumnus of The Ohio State University College of Food, Agricultural, and Environmental Sciences (CFAES), returned to the college as professor and chair in the Department of Horticulture and Crop Science in August 2021. Prior, he worked at the University of Arkansas, where he was interim assistant director of the Arkansas Agricultural Experiment Station and a turfgrass specialist, professor, and assistant head in the Department of Horticulture. He started his career as an assistant professor in that department in 2000.

Susan Land

PENNSYLVANIA STATE
UNIVERSITY



Department Head
Learning & Performance Systems
sland@psu.edu

Susan Land serves as the Head of the Department of Learning and Performance Systems within the College of Education at Penn State (University Park) and a Professor in the Learning, Design, and Technology program. Land's research investigates frameworks for the design of open-ended, technology-enhanced learning environments. Her current research examines the design of mobile, augmented reality (AR) to support science learning in outdoor community spaces. The project engages rural families and visitors to public, outdoor community spaces to "see the unseen" science around them.

Lucie Laurian

UNIVERSITY OF IOWA



Professor and School Director
School of Planning and Public
Affairs
LUCIE-LAURIAN@UIOWA.EDU

Lucie Laurian is Professor of Urban and Regional Planning and Director of the School of Planning and Public Affairs at the University of Iowa.

Dan Li

INDIANA UNIVERSITY



Professor
Kelley School of Business
lid@iu.edu

Dan Li is the Waters Chair and Professor of International Business at the Kelley School of Business, Indiana University. Her research and teaching focus on firms' international business activities. Dan's work has been published in leading journals in the fields of international business and strategic management. She served as the Editor of Business Horizons and Associate Editor of Global Strategy Journal and is an Area Editor of Journal of International Business Studies. She is currently the Chair of the Management & Entrepreneurship Department.

Chad Lochmiller

INDIANA UNIVERSITY



Department Chair
Educational Leadership & Policy
Studies
clochmil@indiana.edu

Chad Lochmiller is chair of the Department of Educational Leadership & Policy Studies and a faculty member in Educational Leadership in the IU School of Education. His current research examines leadership and policy issues related to K-12 schools, including issues related to continuous improvement and resource allocation. Across his research, he centers the work of administrators in introducing, supporting, and sustaining improvement activities as well as the ways in which leadership capacity for improvement efforts is developed at different organizational levels.

Alfred Lopez

PURDUE UNIVERSITY



Professor and Head
School of Interdisciplinary Studies
alopez@purdue.edu

Alfred J. López is Professor and Head of the School of Interdisciplinary Studies at Purdue University. He is the author of five books, including *José Martí: A Revolutionary Life* (U Texas P, 2014), the definitive biography of Cuba's greatest national hero. His essays have appeared in *American Literature*, *Comparative Literature*, *South Atlantic Quarterly*, *Modern Fiction Studies*, and the *Huffington Post*, among many other journals and periodicals. López was also founding editor of *The Global South*, the leading journal of globalization and global South studies in the humanities.

Karla Mallette

UNIVERSITY OF MICHIGAN



Professor
Middle East Studies
alrak@umich.edu

Karla Mallette is Professor of Italian in the Dept of Romance Languages and Literatures and Professor of Mediterranean Studies in the Dept of Middle East Studies at the University of Michigan. She is the author of *The Kingdom of Sicily, 1100-1250: A Literary History* (2005), *European Modernity and the Arab Mediterranean* (2010), and *Lives of the Great Languages: Latin and Arabic in the Medieval Mediterranean* (2021), and numerous articles on medieval literature and Mediterranean Studies. She is currently Chair of the Department of Middle East Studies at the University of Michigan.

Jennifer Marshall

UNIVERSITY OF MINNESOTA



Professor and Chair
Art History
marsh590@umn.edu

Dr. Marshall serves as Professor and Chair in the Department of Art History at the University of Minnesota. She has a long track record of work in academic programming service, scholarly editorial duties, and undergrad curricular and writing instruction planning. Dr. Marshall's research focuses on American material culture and Depression-era modernism.

Michael McElroy

UNIVERSITY OF MICHIGAN



Chair
Musical Theatre
mdmcel@umich.edu

Michael McElroy is the newly appointed Chair of the Department of Musical Theater at the University of Michigan. Previously, Michael was Associate Arts Professor and Head of Vocal Performance in the New Studio on Broadway at NYU/Tisch. He also served as Associate Chair and Director of Diversity Initiatives for the Undergraduate Drama Department. A Broadway performer and arranger, Michael was nominated for a Grammy, and Tony for his work. He received his second Tony Honor for Excellence in the Theatre in 2019 on behalf of Broadway Inspirational Voices which he founded in 1994.

W. Scott McGraw

OHIO STATE UNIVERSITY



Chair
Anthropology
mcgraw.43@osu.edu

DEO FELLOWS 2022-2023

Scott McGraw is a Professor of Anthropology and Chair of the Department of Anthropology at the Ohio State University. He is co-director of the Tai Forest Monkey Project in the Ivory Coast where he has worked since 1992. His research combines aspects of behavior, anatomy, and evolution and he has published on a variety of topics including primate positional behavior, feeding and foraging, locomotor morphology, cranio-dental anatomy, and predator-prey dynamics.

Laura Murray-Kolb

PURDUE UNIVERSITY



Professor and Department Head
Nutrition Science
lmurrayk@purdue.edu

Laura Murray-Kolb is a Professor and Head of the Department of Nutrition Science at Purdue University and an Adjunct Professor in the Department of International Health at the Johns Hopkins Bloomberg School of Public Health. Dr. Murray-Kolb integrates her training in nutrition, child development, and cognitive psychology to study the neurophysiological and neuropsychological consequences of micronutrient deficiencies in young mothers and their children. She has received numerous research and teaching awards, serves on editorial boards, and advises several taskforces.

Karthik Namasivayam

MICHIGAN STATE UNIVERSITY



Director
The School of Hospitality
Business, Eli Broad College of
Business
namasiv2@broad.msu.edu

Karthik has over 40 years of experience in the hospitality industry. He has managed resorts, food and beverage operations, and luxury hotels in the Maldives, Switzerland, India, and USA. He obtained his Masters and PhD from Cornell University and has undergraduate degrees in Economics and hospitality management from India. He taught at Penn State University and held academic administration posts at the Rochester Institute of Technology and Ecole hoteliere de Lausanne, Switzerland before joining Michigan State as Director of the School of Hospitality Business.

Jonathan O'Brien

UNIVERSITY OF NEBRASKA-
LINCOLN



US Bank Distinguished Professor of
Business and chair of the
Management Department
Management
jon.obrien@unl.edu

Jonathan O'Brien received a B.A. from the University of New Brunswick, a M.Sc. from Northwestern University, and a Ph.D. from Purdue University. He is currently the US Bank Distinguished Professor of Business and chair of the Management Department at the University of Nebraska. He has previously served on the faculties at Rensselaer Polytechnic Institute, the University College Dublin, and at the University of Notre Dame. His research focuses on the governance of strategic assets.

Annette O'Connor

MICHIGAN STATE UNIVERSITY



ChairPerson

Department of Large Animal
Clinical Sciences
oconn445@msu.edu

DEO FELLOWS 2022-2023

Dr. O'Connor is a veterinarian and quantitative epidemiologist interested in applying quantitative epidemiology and research synthesis methods to better inform policy related to uses of animals in research, food safety, one health, animal welfare, animal health, and veterinary clinical practice. She currently works at MSU.

Marvin Overby

PENNSYLVANIA STATE
UNIVERSITY



Director

School of Public Affairs
overby@psu.edu

Professor of Political Science and Director of the School of Public Affairs, Penn State Harrisburg. Previously University of Missouri (2002-19), University of Mississippi (1993-2002), and Loyola University Chicago (1990-93); visiting appointments at University of Szeged (Laszlo Orszagh Fulbright Distinguished Lecturer, 2000-01), Johns Hopkins University-Nanjing University Center for Chinese and American Studies (Fei Yi-Ming Visiting Professor of Comparative Politics, 1997-98 and 2005-06), and John W. Kluge Center at the Library of Congress (Distinguished Visiting Scholar, 2018-19)

Assimina Pelegri

RUTGERS UNIVERSITY-NEW
BRUNSWICK



Professor and Chair
Mechanical and Aerospace
Engineering
pelegri@rutgers.edu

DEO FELLOWS 2022-2023

Dr. Assimina Pelegri is a Professor and Department Chair of the Mechanical and Aerospace Engineering at Rutgers University. She studies mechanics of ballistic materials and neuron degeneration for Alzheimer's and TBI. Mina leads the ASME Space Habitats and Exploration TG. Her accolades include Engineering Faculty of the Year (Rutgers), Outstanding Young Engineering Alumni (Georgia Tech), ASME Gold Medal, Amelia Earhart, and Fulbright awards. She has PhD and MS degrees in Aerospace Engineering, and MoT Business, all from Georgia Tech, and Metallurgical Engineering Diploma from NTUA.

Tuija Pulkkinen

UNIVERSITY OF MICHIGAN



Chair and Professor
Climate and Space Sciences and
Engineering
tuija@umich.edu

Professor Tuija Pulkkinen (Ph.D. University of Helsinki, Finland) is Chair of the Department of Climate and Space at the University of Michigan. Her positions in scientific organizations includes presidency of the European Geosciences Union, and she currently serves in the Steering Group of the Heliophysics Decadal Survey carried out by National Academies. Professor Pulkkinen's research focuses on the plasma physics of the Sun-Earth system. She is a member of the National Academy of Sciences, Academia Europaea, the Royal Astronomical Society, and the Finnish Academy of Sciences.

Julia Sass Rubin

RUTGERS UNIVERSITY-NEW
BRUNSWICK

DEO FELLOWS 2022-2023



Director, Public Policy Program
and Associate Professor
Edward J. Bloustein School of
Planning and Public Policy
jlsrubin@rutgers.edu

Julia Sass Rubin's research interests include nonprofit and public organizations and processes, developmental finance, and education policy. Previously, she consulted for McKinsey & Company & worked in marketing for the Procter & Gamble and Eastman Kodak Companies. Dr. Rubin was a post-doctoral fellow at the Alfred A. Taubman Center for Public Policy at Brown University and a Luce Scholar in Bangkok, Thailand. She earned her PhD and MA from Harvard University, an MBA with distinction from Harvard Business School, and an AB with honors from Harvard-Radcliffe College.

Carla Santos

UNIVERSITY OF ILLINOIS



Professor and Head
Recreation, Sport and Tourism
csantos@illinois.edu

Dr. Carla Santos is Professor & Head in the Department of Recreation, Sport and Tourism, at the University of Illinois. Her research examines communicative practices as a means of addressing the socio-political and cultural impact of tourism on the world's people and cultures. Her work has been featured in media outlets such as CBS News, Wall Street Journal, and National Public Radio. In 2016 she received the King James McCristal Distinguished Scholar award for outstanding achievement in scholarship, and in 2020 she was inducted to the National Academy of Leisure.

Loukia Sarroub

UNIVERSITY OF NEBRASKA-
LINCOLN



Professor and Department
Chairperson
Teaching, Learning, & Teacher
Education
lsarroub@unl.edu

Loukia K. Sarroub is the Marvin C. & Jane N. Nore Professor and Chair of the Dept. of Teaching, Learning & Teacher Ed. She has a Courtesy Professorship in the School of Global Integrative Studies and is affiliated with Women and Gender Studies, the Center for Research on Children, Youth, Families, and Schools, and Quantitative, Qualitative, & Measurement in Education Program. She also served as Chair of Graduate Programs. She received her AB in linguistics at the University of Chicago and her PhD in curriculum and education policy & social analysis at Michigan State University.

Senay Simsek

PURDUE UNIVERSITY



Department Head and Professor
Food Science
ssimsek@purdue.edu

Dr. Senay Simsek is a professor and department head of Food Science at Purdue University. She has a BS degree in chemistry, masters degree in biochemistry from Gebze Technical University in Turkey, and a Ph.D. in food science from Purdue University (2006). She has authored and co-authored numerous research papers and conference contributions in the area of food chemistry. She has been awarded the International Young Scientist Research Award (2013). In 2020, Dr. Simsek was awarded the Andersons Cereals and Oilseeds Award of Excellence by U.S. Quality Grains Research Consortium.

Ruby Tapia

UNIVERSITY OF MICHIGAN



Chair and Associate Professor
Women's and Gender Studies
rtapia@umich.edu

Her research focuses on photography theory, feminist and critical race theory, and critical prison studies. She is co-editor of *Interrupted Life: Experiences of Incarcerated Women in the U.S.* and the University of California book series *Reproductive Justice: New Visions for the 21st Century*. She is author of *American Pietàs: Visions of Race, Death and the Maternal* (2011) and her forthcoming book, *The Camera in the Cage*, interrogates the intersections of prison photography and carceral humanism and puts forth an argument and methodology for abolitionist aesthetics.

David Umulis

PURDUE UNIVERSITY



Head
Weldon School of Biomedical
dumulis@purdue.edu

Dr. David M. Umulis is the Dane A. Miller Head and Professor of the Weldon School of Biomedical Engineering at Purdue University and Director of the NSF-funded EMBRIO Institute. Umulis leads the Weldon School to advance discovery and translation in biomedical imaging, neuroengineering, instrumentation, computational biomedicine, and engineered biomaterials. Umulis is a member of the Purdue Teaching Academy, and he has received 2011 Richard L. Kohls Early Career Award and the 2021 Henry T. Yang Award for Leadership in Service.

Tracy Wang

UNIVERSITY OF MINNESOTA



Department Chair
Finance
wangx684@umn.edu

Tracy Wang is the John Spooner Professor of Finance and an editor for Journal of Corporate Finance. Her expertise lies in the fields of corporate governance, law and economics, and behavioral finance. Her current research explores the impact of prominent societal trends such as increasing attention to ESG and DEI, increasing polarization in ideology, and increasing income inequality on corporate finance and corporate governance. She has also established expertise in research related to corporate securities fraud, securities market regulation, and the value impact of management.

Jyoti Watters

UNIVERSITY OF WISCONSIN-
MADISON



Professor and Chair
Comparative Biosciences
jjwatters@wisc.edu

I have been at the UW-Madison for almost 25 years. I have a PhD in pharmacology from the University of Washington in Seattle. My lab studies how brain immune cells contribute to adult neural dysfunction following exposure to various early life challenges, and their role in orchestrating sex differences in adult brain disorders. I train graduate, undergraduate and postdoctoral students in the lab and teach pharmacology in the classroom to veterinary medical students. I began my role as department chair in 2021.

E.J. Westlake

OHIO STATE UNIVERSITY



Professor and Chair
Theatre, Film, and Media Arts
westlake.35@osu.edu

Dr. Westlake is the Professor and Chair of the Department of Theatre, Film, and Media Arts at The Ohio State University. She has been teaching theatre for 25 years. Westlake is the author of *Our Land is Made of Courage and Glory*, *World Theatre: The Basics*, and co-editor of *Political Performances*. Westlake's articles on performance theory have appeared in *Theatre Annual*, *Latin American Theatre Review*, *TDR*, and *Youth Theatre Journal*.

Patricia Wittkopp

UNIVERSITY OF MICHIGAN



Professor
Ecology and Evolutionary Biology
wittkopp@umich.edu

Dr. Wittkopp received her BS at the University of Michigan in 1997, her PhD in Genetics from the University of Wisconsin in 2002, and conducted postdoctoral research at Cornell University from 2002–2005. In 2005, Wittkopp joined the University of Michigan faculty in Ecology and Evolutionary Biology (EEB) and Molecular, Cellular, and Developmental Biology (MCDB). She is now the Arthur F. Thurnau and Sally L. Allen Collegiate Professor of EEB and MCDB, and became chair of the EEB department in 2020. She has been selected as a Guggenheim fellow and a fellow of AAAS.

Jennifer Yoos

UNIVERSITY OF MINNESOTA



Head and Professor
School of Architecture
yoosx001@umn.edu

Jennifer previously taught as the NADAAA Visiting Professor at Cooper Union and the Ruth and Norman Moore Visiting Professor at Washington University-St. Louis. She was awarded a Loeb Fellowship at Harvard's GSD, and received a graduate diploma from the Architectural Association in London and professional degree from the University of Minnesota. She is partner of VJAA, recipient of the 2012 National American Institute of Architects Firm Award. She is co-author, with partner Vincent James, of a monograph on their work (Princeton Architectural Press) and their book *Parallel Cities*.

Steve Abel

PURDUE UNIVERSITY



Associate Provost
Office of Engagement
abels@purdue.edu

Steve Abel was named Associate Provost for Engagement, Purdue University in January 2016. Prior to his appointment he served as Associate Vice President for Engagement (2014-2016), Associate Vice Provost for Faculty Affairs, Purdue University (2012-2014) and held various positions within the Purdue University College of Pharmacy including Assistant/Associate Dean for Clinical Programs, and Bucke Professor/Head, Department of Pharmacy Practice. Steve received his B.S. (Pharmacy) and PharmD degrees from Purdue University and completed residency training at Mayo Medical Center.

Marilyn Amey

MICHIGAN STATE UNIVERSITY



Assistant Provost
Office of Faculty and Academic
Staff Development
amey@msu.edu

Marilyn Amey is Assistant Provost for Faculty and Academic Staff Development and Professor of Higher Education at Michigan State University. She served as the chair of the Department of Educational Administration for almost 15 years, and was Interim Associate Provost for Faculty and Academic Staff Development for two years before assuming her current role. Her research has focused on leadership, including women leaders, organizational change, and community colleges.

Kathy Bieschke

PENNSYLVANIA STATE
UNIVERSITY

DEO LIAISONS 2022-2023

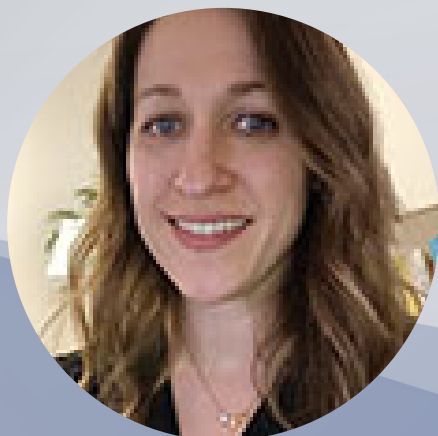


Vice Provost
Office of the Vice Provost for
Faculty Affairs
kxb11@psu.edu

Kathy Bieschke was appointed Vice Provost for Faculty Affairs at the Pennsylvania State University in August of 2017. She earned a B.S. in Psychology and a M.S. in Clinical Psychology from Illinois State University, and a Ph.D. in Counseling Psychology in 1991 from Michigan State University. Kathy joined the faculty at Penn State University in 1991 and is a Professor of Education. Her previous administrative roles include Head of Educational Psychology, Counseling, and Special Education from 2013–2016, and Interim Dean of the Schreyer Honors College in 2016–2017.

Emma Andruczyk

BIG TEN ACADEMIC ALLIANCE

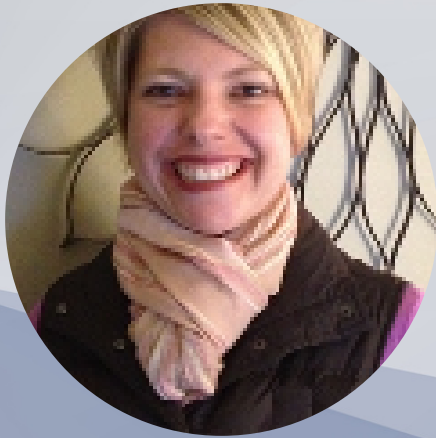


Program Coordinator
Programs Team
emma.andruczyk@btaa.org

Emma Andruczyk is a Program Coordinator at the Big Ten Academic Alliance. Emma assists with the management of programs focusing on leadership development for postdoctoral scholars and faculty, as well as course sharing and fellowship opportunities for PhD and graduate students. Her programs support the multi-university collaborative initiatives supported by the Big Ten Academic Alliance Graduate Deans and Vice Provosts of Faculty Affairs.

Charity Farber

BIG TEN ACADEMIC ALLIANCE



Associate Director
Programs Team
charity.farber@btaa.org

DEO LIAISONS 2022-2023

Charity Farber is an Associate Director at the Big Ten Academic Alliance. During her ten years at the Big Ten Academic Alliance, she has managed a wide-range of programs including undergraduate research, study abroad, course sharing, graduate recruitment, and faculty development. In her current role, she leads large-scale, multi-university collaborative professional development initiatives supported by the Big Ten Academic Alliance Provosts, National Science Foundation, and Andrew W. Mellon Foundation.

Kimberly Geeslin

INDIANA UNIVERSITY



Associate Vice Provost
Office of the Vice Provost for
Faculty and Academic Affairs
kgeeslin@indiana.edu

Kimberly is Associate Vice Provost for Faculty & Academic Affairs, Director of the Initiative for the Advancement of Women Faculty, and Professor of Hispanic Linguistics. Prior to joining OVPFAA in 2017, she served as director of Hispanic linguistics, interim chair, and associate chair of the Department of Spanish & Portuguese. Kimberly is author/editor of 8 books and 85 article-length publications. She has received several teaching awards, including two distinguished career awards: The College of Arts and Sciences, David and Cheryl Morley award and the FACET Carol Hostetter awards.

Lois Geist

UNIVERSITY OF IOWA



Associate Provost for Faculty
Office of the Provost
lois-geist@uiowa.edu

Lois J. Geist was appointed associate provost for faculty in November 2019. She earned a doctor of medicine degree from Case Western Reserve University. Dr. Geist has been a professor in the Department of Internal Medicine, Division of Pulmonary, Critical Care, and Occupational Medicine at the University of Iowa since 1990 and has served as associate dean of faculty affairs and development since 2003 while maintaining an active clinical practice.

Ole Gram

UNIVERSITY OF MINNESOTA



Associate Vice Provost
Faculty and Academic Affairs –
Provost's Office
gram@umn.edu

Ole Gram serves as the associate vice provost for faculty and academic affairs. In this role his primary responsibilities include implementation of key policies and initiatives, development and review of policies related to evaluation of teaching, outside professional commitments, promotion and tenure processes, responses to faculty issues, faculty leaves, salary equity, faculty awards, and faculty and department head/chair professional development.

Sascha Matish

UNIVERSITY OF MICHIGAN

DEO LIAISONS 2022-2023



Associate Vice Provost and Senior
Director
Academic Human Resources
amatish@umich.edu

Sascha was appointed Associate Vice Provost for Academic and Faculty Affairs and Senior Director of Academic Human Resources at the University of Michigan in June 2019. Sascha initially joined Academic Human Resources in June of 2008. Prior to coming to University of Michigan, Sascha worked as an assistant general counsel at Wayne State University, where she focused on labor and employment law. Sascha also worked as a union-side attorney in a law firm specializing in public sector labor law in educational settings.

Lisa Mauer

PURDUE UNIVERSITY



Associate Vice Provost
Provost Faculty Affairs Office
mauerl@purdue.edu

Lisa Mauer is the Associate Vice Provost for Faculty Affairs and Professor of Food Science at Purdue University. She has been on the Purdue faculty since 2001 and is well known for her leadership as well as her scholarship in the area of food materials science and teaching of numerous highly regarded food science courses.

Beth Meyerand

UNIVERSITY OF WISCONSIN-
MADISON

DEO LIAISONS 2022-2023



Vice Provost
Faculty and Staff Affairs
memeyerand@wisc.edu

Beth is a Vilas Distinguished Achievement Professor and has been a faculty member at UW-Madison since 1998. She is a faculty member in the Department of Medical Physics and the Department of Biomedical Engineering and served as the Chair of the Biomedical Engineering Department for six years. She has served in the role of Vice Provost since July 2020.

Jan Neiger

OHIO STATE UNIVERSITY



Assistant Vice Provost
Provost Office
neiger.4@osu.edu

Assistant Vice Provost focusing on academic policies and procedures; faculty hiring initiatives, development, and conduct; training and leadership opportunities; and conflicts of interest and ethics. Prior to joining the Provost Office, served as Associate General Counsel at Ohio State and the University of Cincinnati. Began legal career in higher education at the Ohio Attorney General's Office serving as assistant chief and chief of the Education Section. Received B.A. and J.D. from Ohio State and Ph.D. in Higher Education Administration from Bowling Green State University.

Laura Rosenthal

UNIVERSITY OF MARYLAND

DEO LIAISONS 2022-2023



Director for Faculty Leadership
Office of Faculty Affairs
lrosent1@umd.edu

Laura J. Rosenthal is the Director for Faculty Leadership and a Professor in the English Department. In the Office of Faculty Affairs, she leads projects on faculty development and leadership development. Dr. Rosenthal previously served as the ADVANCE Professor for the College of Arts and Humanities, advancing women and faculty of color. She is the author or editor of five books on Eighteenth-Century British literature and editor of the journal 'Restoration: Studies in Literature and Culture.' Her scholarship focuses on gender, empire, and histories of emotion.

Amy Santos

UNIVERSITY OF ILLINOIS



Associate Provost for Faculty
Development
Office of the Vice Chancellor for
Academic Affairs and Provost
rsantos@illinois.edu

Rosa Milagros Santos is the Associate Provost for Faculty Development. In this role, she assists with processes and policies related to faculty development and success, including faculty mentoring, support for pre-tenure and mid-career faculty, career paths for specialized faculty, and leadership development. She also oversees the new faculty orientation, mid-career faculty programming, and the dual-career academic couples program.

Karen Stubaus

RUTGERS UNIVERSITY-NEW
BRUNSWICK



Vice President
Academic Affairs

stubaus@oldqueens.rutgers.edu

DEO LIAISONS 2022-2023

Dr. Karen R. Stubaus serves as Vice President for Academic Affairs at Rutgers University. Over the course of her career she has been responsible for faculty affairs and academic labor relations, as well as for increasing the diversity of the faculty and promoting women's leadership. She chairs the University's current Initiative on Sexual Harassment Prevention and Culture Change. A Ph.D. in seventeenth-century American history, Dr. Stubaus is currently engaged in a study of the intersection of graduate student activism, sexual harassment, and collective bargaining.

Saundra Tomlinson-Clarke

RUTGERS UNIVERSITY-NEW
BRUNSWICK



Senior Vice Provost for Academic
and Faculty Affairs
Office of the Chancellor-Provost
smaria@gse.rutgers.edu

Saundra Tomlinson-Clarke is a Professor and Senior Vice Provost for Academic and Faculty Affairs, Rutgers New Brunswick. She supports all areas related to academic affairs and innovation, as well as faculty mentoring, and career advancement. She is a licensed psychologist, with research focusing on interdisciplinary perspectives in developing culturally responsive interventions to enhance learning and psychological well-being. She received her bachelor's degree from Boston University, master's degree from Atlanta University, and Ph.D. from Florida State University.

Judy Walker

UNIVERSITY OF NEBRASKA-
LINCOLN



Associate Vice Chancellor
Faculty and Academic Affairs
judy.walker@unl.edu

Judy Walker is the Associate Vice Chancellor for Faculty Affairs and Aaron Douglas Professor of Mathematics at the University of Nebraska-Lincoln. An alumna of the University of Illinois and the University of Michigan, she co-founded the Nebraska Conference for Undergraduate Women in Mathematics and currently serves as the Chair of the Board of Trustees of the American Mathematical Society (AMS). She was named a Fellow of the AMS in 2012, a Fellow of the Association for Women in Mathematics in 2019 and a Fellow of the American Association for the Advancement of Science in 2022.